

• In addition to routine checks for each use, PPE should regularly undergo a detailed inspection by a competent person.

Petzl recommends an inspection every 12 months and after any exceptional event in the life of the product.

• PPE inspection should be done with the manufacturer's instructions available for reference. Download the instructions at PETZL.COM



PULLEYS

1. Known product history

Any PPE showing unexpected degradation should be quarantined, pending a detailed inspection.

The user should:

- Provide precise information on the usage conditions.
- Report any exceptional event regarding his PPE.

(Examples: fall or fall arrest, use or storage at extreme temperatures, modification outside manufacturer's facilities, etc.).

2. Preliminary observations

Verify the presence and legibility of the serial number and the CE mark.

Attention, the serial number code on our products is evolving. Two types of code will coexist. See below for details on each serial number code.

Code A:

00 000 AA 0000

Year of manufacture	00
Day of manufacture	0000
Name of Inspector	AA
Incrementation	0000

Code B:

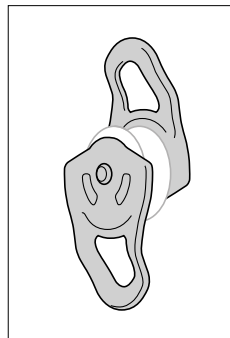
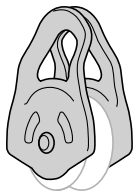
00 A 0000000 000

Year of manufacture	00
Month of manufacture	A
Batch number	0000000
Incrementation	000

Verify that the product lifetime has not been exceeded.

Compare with a new product to verify there are no modifications or missing parts.

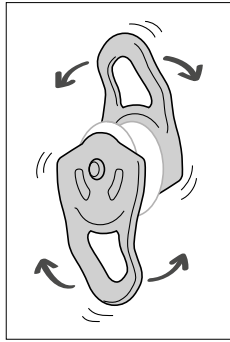
3. Checking the condition of the side plates



- Check the condition of the side plates (marks, deformation, cracks, corrosion, wear...).



- Check the condition of the attachment holes (marks, deformation, cracks, corrosion...).

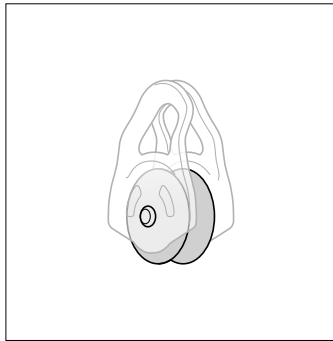
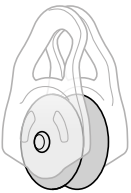


- For pulleys with moving side plates, verify that the side plates rotate properly.

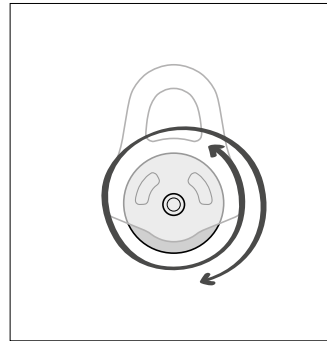


- Check the condition of the rivets (marks, deformation, cracks, corrosion, absence of play...).

4. Checking the condition of the sheave

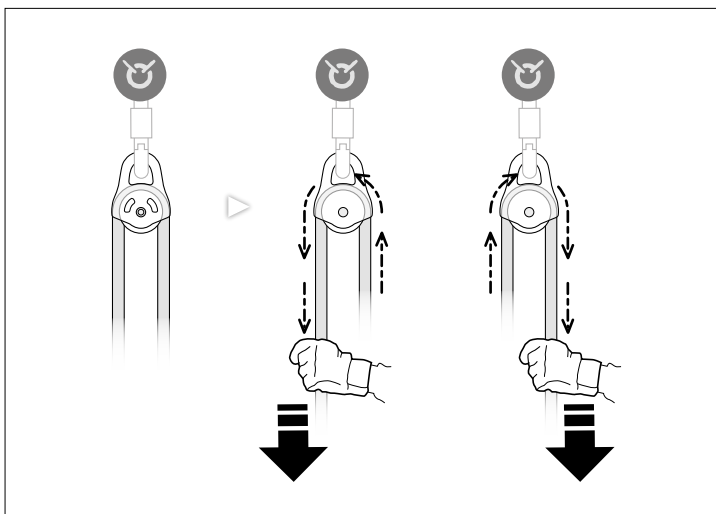


- Check the condition of the sheave (marks, deformation, corrosion, absence of foreign bodies...).



- Verify that the sheave turns freely.

5. Function check



- Install your pulley on an anchor and install a compatible rope around the sheave.
- Circulate the rope in both directions.